

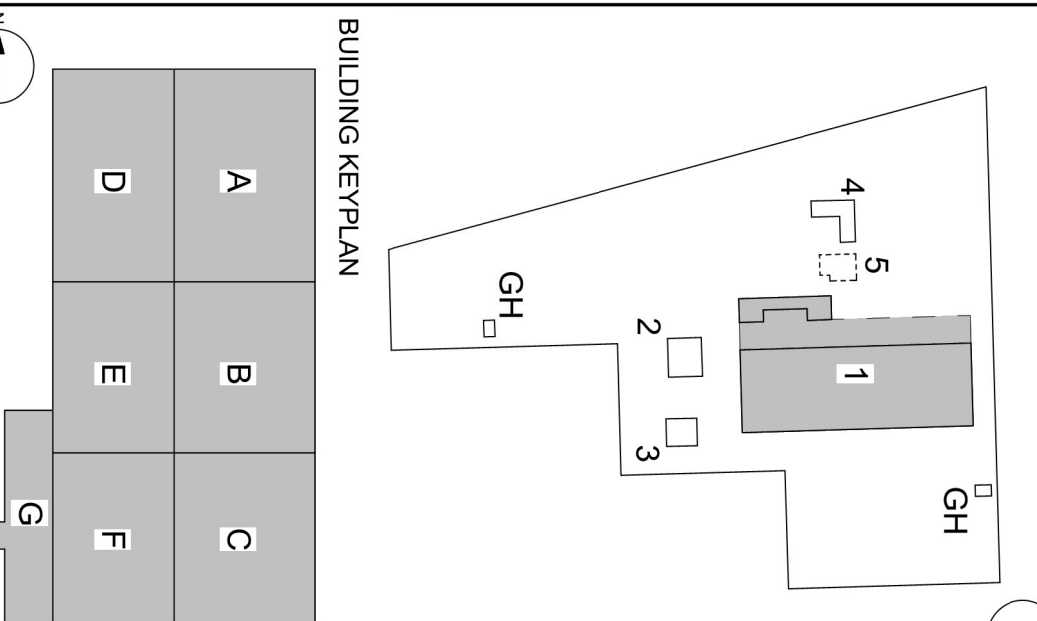
Calculation Summary							
Label	CalcType	Units	Avg	Max	Min	Avg/Min	Max/Min
BUS PARKING	Illuminance	Fc	2.22	5.0	1.0	2.22	5.00
BUS WASH AREAS	Illuminance	Fc	3.35	7.7	1.0	3.35	7.70
MAIN PKG & COPANS ENTRANCE_Planar	Illuminance	Fc	2.90	7.1	1.0	2.90	7.10
NON-RESI PROPERTY LINE 5' AFG	Illuminance	Fc	0.50	2.4	0.0	N.A.	N.A.
NORTH BUS PARKING	Illuminance	Fc	2.87	9.7	1.0	2.87	9.70
PATHWAY_Planar_1	Illuminance	Fc	1.85	3.3	0.5	3.70	6.60
COPANS ROADWAY_Planar	Illuminance	Fc	1.70	6.0	0.6	2.83	10.00

1 N University Dr, Plantation, FL, 33324



This drawing has been prepared solely for the intended use, thus any reproduction or distribution for any purpose other than authorized by Arcadis is forbidden. Written dimensions shall have precedence over scaled dimensions. Contractors shall verify and be responsible for all dimensions and conditions on the job, and Arcadis shall be informed of any variations from the dimensions and conditions shown on the drawing. Shop drawings shall be submitted to Arcadis for general conformance before proceeding with fabrication.

ISSUES	DESCRIPTION	DATE
A	ISSUED FOR SD	2023-08
B	ISSUED FOR CD	2024-03
C	ISSUED FOR DRG	2024-05
D	ISSUED FOR 30% CD	2024-07
E	DRG RESUBMITTAL	2024-07
F	ISSUED FOR 80% CD	2024-10
G	ISSUED FOR 100% CD	2024-12
I	ISSUED FOR SPA. MOD	2025-11



CONSULTANTS

ARCADIS

7000 N FEDERAL HWY - 2ND FLOOR
BOCA RATON, FL 33487

7000 N FEDERAL HWY - 2
BOCA RATON, FL 33487

email: jay.kelly@arcadis.com email: petr.cla.namudo@arcadis.com

ARCADIS

21 CUSTOM HOUSE ST - 3RD FLOOR
BOSTON, MA 02110
(617) 552-3600

421 FAYETTEVILLE STREET
SUITE 1609
BALTIMORE, MD 21201

email: phil.colburn@garciads.com
contact KEVIN SCHAEFFER
email: kevin.schaeffer@garc

STUDY OF THE EFFECTS OF THE 2008 FINANCIAL CRISIS ON THE UK ECONOMY

JEZERINAC
LAKSDAS/YOKALEM
ENGINEERING, INC.

2211 NE 54TH STREET
FORT LAUDERDALE, FL

EMAIL: brad@lifestylegroup.com



SEC Smith Engineering
Consultants, Inc.
10001 Oak Grove Drive
Dallas, TX 75243

2161 PALM BEACH LAKES BLVD
SUITE 312
WEST PALM BEACH, FL 33409

contact: STEVE P. HOCKMAN
email:
Steve23401@earthlink.net/steve23401.com

SEAL

PRIME CONSEIL TANT

►

Suite 307A - 1451 W. Cypress Creek R
Fort Lauderdale FL 33309 USA

www.arcadis.com

COPANS TRANSIT OPERATIONS FACILITY

3201 W Copans Road

--	--

136677	2011-10-10 10:10:10
--------	---------------------

FR	LMS
DECEASED	ADDED

SH	LMS
0.1	0.1
0.2	0.2
0.3	0.3
0.4	0.4
0.5	0.5
0.6	0.6
0.7	0.7
0.8	0.8
0.9	0.9
1.0	1.0

SITE LIGHTING

SHEET NUMBER

15.100.1